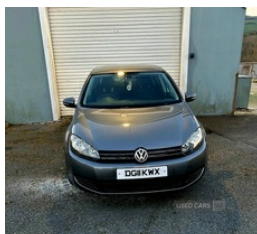
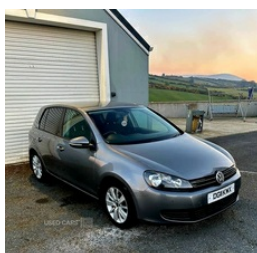


Volkswagen Golf 1.6 TDi 105 Match 5dr | 2011

BLUETOOTH & PARKING SENSORS. FANTASTIC FIRST CAR, CHEAP TAX

£2,900



2011 Volkswagen Golf 1.6 TDI - Great First Car - Full MOT & Tax Only £35 Per Year

127,500 miles | Diesel | Manual | Grey | 1.6L

A brilliant choice for a first-time driver or anyone after a reliable daily runner. This Volkswagen Golf drives well and comes packed with practical features:

Features include:

Full year MOT, just passed!

Only £35 annual road tax

Bluetooth audio & hands-free connectivity

Front & rear parking sensors

Economical 1.6L diesel engine

Finished in stylish Grey

Miles:	127500
Fuel Type:	Diesel
Transmission:	Manual
Colour:	Grey
Engine Size:	1598
CO2 Emission:	119
Tax Band:	C (£35 p/a)
Body Style:	Hatchback
Reg:	DG11KWX

Technical Specs

DIMENSIONS	
Length:	4199mm
Width:	1786mm
Height:	1479mm
Seats:	5
Luggage Capacity (Seats Up):	350L
Gross Weight:	1870KG
Max. Loading Weight:	601KG

PERFORMANCE & ECONOMY

Fuel Consum. (Urban Cold):	49.6MPG
Fuel Consum. (Extra Urban):	72.4MPG
Fuel Consum. (Combined):	62.8MPG
Fuel Tank Capacity:	55L
Number Of Gears:	5 SPEED
Top Speed:	117MPH
Acceleration 0-100 km/h:	11.3s
Engine Power BHP:	103.3BHP

Well maintained with plenty of life left. Cheap to run, insure and tax. Ideal for town or motorway driving. Few age related marks as expected

£3000 REDUCED TO CLEAR!

Call or (text after 6pm) to arrange a viewing or test drive.

Serious wee car for the money!

Vehicle Features

'Lights On' warning buzzer, 3 point height adj front seatbelts + pretensioners, 3 rear 3 point seatbelts, 3 rear headrests, 12V socket in luggage compartment, 60/40 split folding rear seat, ABS, Alarm with interior protection, Auto hold function, Automatic illuminating hazard lights in sudden deceleration, Bag hook in luggage compartment, Bluetooth Telephone preparation, Body colour bumpers, Body colour door handles, Body colour door mirrors with integral indicators, Boot lashing points, Brake pad wear indicator warning light, CBA, Chrome-plated light switch surround, Chrome plated instrument surrounds, Chrome trimmed radiator grille louvre inserts, Convenience Pack - Golf, cooled glovebox, Courtesy light delay, Cover for storage compartment in centre, Cruise control, Diesel particulate filter, Door open warning reflectors, Driver/Front Passenger airbags, Driver/Passenger whiplash optimised head restraints, Drivers knee airbag, Dust/pollen filter, Electrically adjustable and heated door mirrors, Electric front windows, Electric rear windows, Electronic engine immobiliser, ESP with EDL + ASR, Exterior temperature gauge, Front and rear curtain airbags, Front centre armrest with storage box and rear air vents, Front comfort seats with height/lumbar adjust, Front cupholders x 2, Front passenger airbag deactivation, Front side airbags, Grab handles, Green tinted heat insulating glass, HBA (Hydraulic Brake Assist), Heated rear window, Height/reach adjust steering wheel, illuminated, Illuminated vanity mirrors, Independent front and rear reading lights in chrome surround, Isofix preparation for 2 rear child seats, Leather steering wheel/gearknob/handbrake grip, Load through provision, Lockable, Luggage compartment cover, Luggage compartment lighting, Multifunction computer - Highline, Multi function steering wheel, PAS - speed related, Pyramid black decorative inserts, Range adjustable headlights, Rear cupholder, Rear windscreen washer and wiper with interval delay, Remote central locking with 2 remote folding keys, Rev counter, Seatback storage, Smoking pack - Golf, Speed sensitive auto door locking (can be switched off), Steel space saver spare wheel, Storage box in luggage compartment, Storage compartment in roof console with cover, Storage compartments

in doors, Trip and service interval display, Two tone horn,
Ultrasonic front and rear optical and audible parking sensors,
Warning buzzer and light for front seatbelts unfastened, White
adjustable panel illumination, Windscreen wipers/ intermittent
wipe + 4 position delay