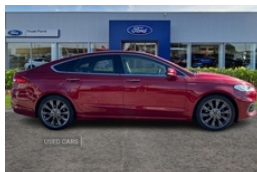


Ford Mondeo Vignale 2.0 EcoBlue 190 5dr Powershift | Jan 2020**HEATED AND COOLED VARIABLE FRONT SEATS, ELECTRIC PARKING BRA****£13,250****Vehicle Features**

2USB, 3rd brake light, 3x3 point rear seatbelts, 4 way headrests, 4 way manual passenger seat, 5 seats, 10 way power adjustable driver seats with memory + passenger seats, 10" TFT cluster display, 10inch TFT cluster display, 12 spkrs, 19" Dark Tarnish alloy wheels, ABS+EBA, Active city stop, Active Noise Control, AM/FM dual tuner, Android auto/Apple carplay, Anti-lock Braking System+EBA, Auto dimming rear view mirror, Automatic headlights with auto high/low beam, Bi-LED adaptive headlamps and power tailgate, Bluetooth, Bluetooth connectivity with voice control, Body colour bumper and side rocker mouldings, CD, CD player and 12 speakers, Centre console with armrest, Curtain airbags, Driver's lumbar support, Driver/front passenger airbag, Drivers knee airbag, Dual zone electronic auto temperature, Electric adjustable door mirrors, Electric parking brake, Emergency call service, Enhanced ambient lighting, ESP + traction control, Folding rear seats, Ford easy fuel, Ford pass connect, Ford power starter and keyless Entry system, Ford SYNC 3 Premium Sony DAB nav - 8inch colour touch, Front and rear luxury velours carpet floor mats, Front door Scuff plates with Vignale script, Front fog lights, Front headrests, Heated and cooled variable front seats, Heated door mirrors, Heated steering wheel, Heated variable front seats, Hill start assist, Immobiliser, Intelligent Protection System (IPS), Isofix child seat attachment, Lane keeping aid, Leather wrapped steering wheel, LED daytime running lights, LED tail lights, Luxury premium leather upholstery, Multi contour seats with massage function, PAS, Power Assisted Steering, Power folding door mirrors with puddle lights, Power folding door mirrors with puddle lights adjustment memory and auto dipping when reversing, Power operated front

Miles:	82862
Fuel Type:	Diesel
Transmission:	SEMI-AUTO
Colour:	Lucid Red
Engine Size:	1996
CO2 Emission:	127
Tax Band:	Petrol/Diesel (£195 p/a)
Body Style:	Hatchback
Insurance group:	29E
Reg:	YL69LCW

Technical Specs

DIMENSIONS	
Length:	4871mm
Width:	1852mm
Height:	1482mm
Seats:	5
Luggage Capacity (Seats Up):	654L
Gross Weight:	2410KG
Max. Loading Weight:	746KG

PERFORMANCE & ECONOMY	
Fuel Consum. (Combined):	48.7MPG
Fuel Tank Capacity:	62L
Number Of Gears:	8 SPEED
Top Speed:	138MPH
Acceleration 0-100 km/h:	8.9s
Engine Power BHP:	187.7BHP

and rear windows with global open and close, Power tailgate, Pre-collision assist with AEB and pedestrian and cyclist detection, Premium leather upholstery, Quickclear heated front windscreen, Radio/CD, Rain sensing front windscreen wipers, Rake/reach adjustable steering wheel, Rear armrest, Rear door child safety locks, Rear headrests, Rear privacy glass, Rear side wing doors, Rear view camera, Rear wiper, Remote central double locking, Service indicator, Sony DAB audio with touchscreen navigation system, SYNC Emergency Assistance, Thatcham category 1 alarm, Traffic sign recognition, Trip computer, Tyre pressure monitoring system, Unique Ford Vignale exterior styling with dark tarnish detailing, USB socket, Vignale upper/lower grille, Voice