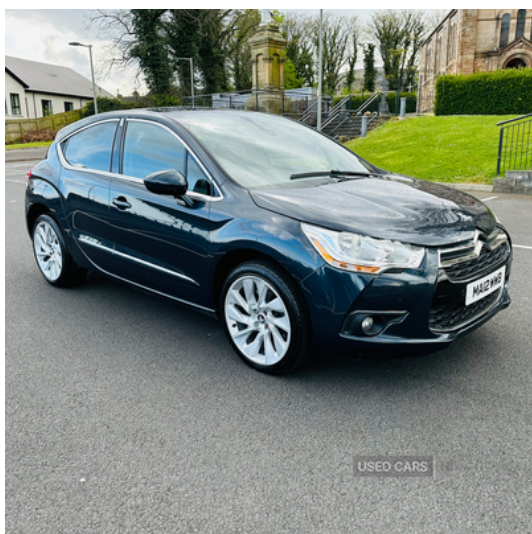


Citroen DS4 2.0 HDi DSport 5dr | Mar 2012

JUST SERVICED EXCELLENT CONDITION WILL COME WITH FULL MOT

£4,995



2013 CITROEN DS4 SPORT 2.0 HDI

ONLY 48,000 MILES JUST FULLY SERVICED BY OURSELVES
EXCELLENT CONDITION THROUGHOUT GENUINE LOW MILES
WILL COME WITH A FULL MOT GREAT VALUE FOR MONEY

FINANCE AVAILABLE ALL CARS HPI CLEAR AND DVA MILLAGE
CHECKED DEBIT CARDS ACCEPTED CALL EC MOTORS

Vehicle Features

3 rear 3 point seatbelts, 12V socket in luggage compartment, 19" Cairns alloy wheels, ABS + EBD + EBA, Aluminium pedals, Anti theft alarm, Automatic headlights, Automatic rain sensing wipers, Auxiliary input socket, Blind spot monitoring, Body colour door handles, Body coloured bumpers, Body coloured door mirrors, Boot net, Chrome grille surround, Chrome rear bumper inserts, Cornering front fog lights, Cruise control + speed limiter, Curtain airbags, Dark tinted rear side windows + tailgate window, Deadlocks, Diesel particulate filter, Driver/Front Passenger airbags, Dual zone automatic air conditioning, Electric adjustable/heated/folding door mirrors, Electric front windows + drivers one touch/anti-trap, Electrochrome rear view mirror, Electronic parking brake, ESP, eTouch Emergency and Assistance system, Front/rear floor mats, Front and rear headrests, Front and rear parking sensors, Front armrest with storage bin, Front lateral airbags, Front passenger seat height

Miles:	48000
Fuel Type:	Diesel
Transmission:	Manual
Colour:	Blue
Engine Size:	1997
CO2 Emission:	134
Tax Band:	E (£195 p/a)
Body Style:	Hatchback
Insurance group:	24E
Reg:	MA12WWB

Technical Specs

DIMENSIONS	
Length:	4275mm
Width:	1810mm
Height:	1523mm
Seats:	5
Luggage Capacity (Seats Up):	385L
Gross Weight:	1880KG
Max. Loading Weight:	384KG

PERFORMANCE & ECONOMY	
Fuel Consum. (Urban Cold):	42.8MPG
Fuel Consum. (Extra Urban):	65.7MPG
Fuel Consum. (Combined):	55.4MPG
Fuel Tank Capacity:	60L
Number Of Gears:	6 SPEED
Top Speed:	132MPH
Acceleration 0-100 km/h:	9.3s
Engine Power BHP:	160.9BHP

adjust, Front seatbelt pretensioners with force limiters, Front sports seats including electric lumbar support, Heated front seats, Height/reach adjust steering wheel, Hill start assist, Immobiliser, Interior mood lighting, Isofix system on outer rear seats, Leather steering wheel with chrome inserts, LED daytime running lights, Multi function trip computer, RDS stereo radio/MP3/CD player with steering mounted controls, Rear wiper, Rechargeable torch, Remote control central locking, Stainless Steel Scuff Plates, Style and Technology signature - DS4, Traction control, Tyre pressure sensor, Tyre repair kit, Variable power steering