

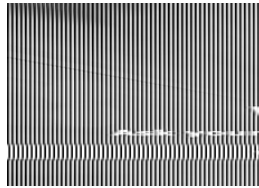
## Kia Sportage 2.0 CRDi KX-3 5dr [Sat Nav] | Feb 2012

**\*\*FINANCE AVAILABLE/ ONE OWNER/ 10 STAMP HISTORY\*\***

# £5,925



USED CARS NI



**\*\*PLEASE CHECK AVAILABILITY BEFORE TRAVELING\*\***  
**FCA REGISTERED DEALER**

**CLICK SEE ALL ADDS TO VIEW ALL OUR STOCK**

**EXCELLENT FINANCE PACKAGES AVAILABLE, SUBJECT TO STATUS!**

**POOR CREDIT APPLICATIONS WELCOME**

**FAST, EASY & FRIENDLY SERVICE**

**CONTACT DIRECTLY FOR PERSONALISED FINANCE QUOTES**

**TRADE INS WELCOME OF LOWER VALUE**

**ALL MAJOR CREDIT & DEBIT CARDS ACCEPTED, CHARGES MAY APPLY**

**BUY WITH CONFIDENCE AT CH CAR SALES! DEALER LEVEL DIAGNOSTICS ON SITE! ALL CARS COME FULLY CHECKED OVER IN OUR WORK SHOP!**

**ALL VEHICLES HPI CLEAR WITH PAGE COMPREHENSIVE PRINT OUT ON REQUEST**

**ALL VEHICLES DVA MILEAGE CHECKED**

<b>Miles:</b>	82000
<b>Fuel Type:</b>	Diesel
<b>Transmission:</b>	Manual
<b>Colour:</b>	Silver
<b>Engine Size:</b>	1995
<b>CO2 Emission:</b>	156
<b>Tax Band:</b>	G (£265 p/a)
<b>Body Style:</b>	Sport utility vehicle
<b>Insurance group:</b>	16E
<b>Reg:</b>	ST61KNW

### Technical Specs

#### DIMENSIONS

<b>Length:</b>	4440mm
<b>Width:</b>	1855mm
<b>Height:</b>	1635mm
<b>Seats:</b>	5
<b>Luggage Capacity (Seats Up):</b>	564L
<b>Gross Weight:</b>	2140KG
<b>Max. Loading Weight:</b>	540KG

#### PERFORMANCE & ECONOMY

<b>Fuel Consum. (Urban Cold):</b>	40.4MPG
<b>Fuel Consum. (Extra Urban):</b>	52.3MPG
<b>Fuel Consum. (Combined):</b>	47.1MPG
<b>Fuel Tank Capacity:</b>	58L
<b>Number Of Gears:</b>	6 SPEED
<b>Top Speed:</b>	112MPH
<b>Engine Power BHP:</b>	134.1BHP

**ONE OWNER FROM NEW**

**FULL SERVICE HISTORY (10 STAMPS)**

**MOT'D FEB 2026**

**HIGH SPEC 4WD**

**KX-3**

**FULL HEATED LEATHER**

**MASSIVE SPEC**

**FACTORY TOUCH SCREEN IN CAR ENTERTAINMENT**

**TWIN SUNROOFS**

**LOVELY LOW MILEAGE EXAMPLE**

**IDEAL FAMILY SUV**

**WE LOOK FORWARD TO HEARING FROM YOU!!**

## **Vehicle Features**

3 passenger grab handles, 3x3 point rear seatbelts, 6 speakers, 7" LCD touch screen navigation with advanced reversing camera sys + bluetooth with phonebook download, 12V power point front, 12V power point in luggage area, 18" 5 twin spoke alloy wheels, 60/40 split folding rear seat, ABS/EBD, Active front headrests, Air filter, Anti theft alarm, Auto dimming rear view mirror, Automatic front rain sensing wipers, Automatic headlights, Automatic unlocking of doors in case of impact, Body colour bumpers, Body colour electric adjustable door mirrors, Centre console storage box/armrest, Centre room lamp, Chrome exterior door handles, Chrome front grille, Cooled glovebox, Cornering light, Cruise control, Deadlocks, Deluxe instrument cluster, Diesel particulate filter, Door armrest in leather, Door courtesy lamps, Door Trim - Metallic, Driver's lumbar support, Driver's seat height adjuster, Driver/passenger sunvisors with ticket holders, Dual front airbags, Dual zone automatic air conditioning, Electric windows, ESP + traction control, Folding door mirrors, Front and rear door pockets, Front drivers side windows/one touch up/down, Front fog lights, Front map lights, Front seatbelt pretensioners + load limiters, Front side airbags, Full leather upholstery, Full size alloy spare wheel, Full size curtain airbags, Heated door mirrors, Heated front and rear

seats, Height adjustable front seatbelts, Hill start assist control (HAC), Ignition key lock illumination, Illuminated vanity mirrors, Immobiliser, Isofix child seat preparation, Leather steering wheel and gear knob, LED daytime running lights, LED indicators in door mirrors, Locking wheel nuts, Luggage area lamp, Luggage compartment cover, Luggage net, Luggage net hooks, Metallic finish inner door handles, Metallic grain dashboard, Panoramic sunroof, Passenger airbag deactivate switch, Privacy glass, RDS radio CD with MP3 player, Rear centre armrest with cupholder, Rear child proof door locks, Rear headrests, Rear spoiler, Rear wiper, Remote central locking with 2 remote folding keys, Reversing Aid Sensors, Silver roof rails, Speed sensitive auto door locking, Speed sensitive front wipers, Speed sensitive power steering, Steering wheel mounted audio controls, Tilt/telescopic adjust steering wheel, Tinted glass, Trip computer, USB/iPod/auxiliary input connections, Windscreen wiper de-icer, Xenon headlights + headlight washers