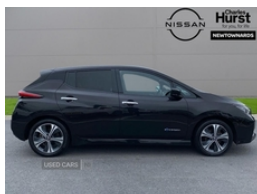


Nissan LEAF 110Kw Tekna 40Kwh 5Dr Auto | Sep 2019

HEATED SEATS- 12MTH WARRANTY

£9,398



Nissan LEAF 110kW Tekna 40kWh – Pearl Black Zero Emissions. Maximum Comfort. Looking for an eco-friendly ride with premium features? This Nissan LEAF Tekna, finished in sleek Pearl Black, offers a smooth, all-electric drive with an impressive range of up to 168 miles on a full charge. Whether it's your daily commute or a weekend trip, . ? Customisable Touchscreen with Sat Nav – Stay connected & on course. ? Regenerative Braking & Eco Drive Modes – Maximise efficiency. ? Intelligent Rear View Mirror – A clearer view, always. ? Keyless Entry & Start – No more fumbling for keys. Luxury & Comfort Features: ? Heated Front & Rear Seats + Heated Steering Wheel – Stay cozy all year round. ? Auto Lights & Rain-Sensing Wipers – Ready for any weather

Vehicle Features

3 point front seatbelts with pre-tensioners, 3x3 point rear seatbelts, 6.6 kw On-board charger, 6.6 kW onboard charger, 7" Combimeter, 17" alloy wheels, 60/40 split folding rear seat, 360 camera, ABS with EBD and brake assist, Adaptive cruise control, Air Conditioning, Alarm, AM/FM/DAB audio system, Anti-lock Braking System, Anti dazzle rear view mirror, Apple car play/Android Auto, Auto dimming rear view mirror, Auto lights, Automatic activation of hazard warning lights, Automatic air conditioning with timer and heater, Automatic rain sensing wipers, Aux-in socket, Blind spot warning, Bluetooth Connection, Bluetooth Music Streaming, Body coloured door mirrors with integrated LED indicators, Bose Premium Audio system+7 speakers, Chrome door handles, Climate Control, Collision Detection, Compatible With Apple Carplay or Android Auto, Cruise Control, Curtain airbags, Deadlock, Diamond cut alloys,

Miles:	45759
Fuel Type:	Electric
Transmission:	Automatic
Colour:	Black
Tax Band:	Electric (£195 p/a)
Body Style:	Hatchback
Insurance group:	21E
Reg:	XHZ3120

Technical Specs

DIMENSIONS	
Length:	4490mm
Width:	1788mm
Height:	1540mm
Seats:	5
Luggage Capacity (Seats Up):	435L
Gross Weight:	1995KG
Max. Loading Weight:	415KG

PERFORMANCE & ECONOMY

Fuel Consum. (Urban Cold):

Not AvailableMPG

Fuel Consum. (Extra Urban):

Not AvailableMPG

Fuel Consum. (Combined):

Not AvailableMPG

Fuel Tank Capacity:

Not AvailableL

Number Of Gears: 1 SPEED

Top Speed: 90MPH

Acceleration 0-100 km/h: 7.9s

Digital cockpit, Door mirrors with turn signal and puddle lamps, Driver and passenger airbags, Dynamic light assist, Electrically adjustable and folding door mirrors, Electric Door Mirrors, Electric front/rear windows, E Pedal, EVSE charging cable, Follow me home headlights, Front & Rear Parking Sensors, Front-facing Camera, Front centre console and armrest, Front Fog Lamps, Front head restraints, Front seatback pocket, Front seatbelt pretensioners + load limiters, Gloss black finish B pillar, Heated Seats, Heated steering wheel, Heat pack - Leaf, Heat pump system with remote control, Height adjustable driver seat, Height adjustable front seatbelts, High beam assist, Hill start assist, Illuminated charge port, Immobiliser, Intelligent auto headlights, Intelligent Cruise control (ICC), Intelligent emergency braking with pedestrian recognition, Intelligent lane intervention, Intelligent trace control, Internet Connection/WIFI Hotspot, Isofix child seat anchor points, Isofix Mounting Points, Keyless Entry, Keyless Start, Lane departure warning system, Leather D shaped steering wheel, Leather Interior, LED Pack - Leaf, LED signature daytime running lights, LED tail light signature, Manual adjust driver/passenger seats, Metallic blue rear bumper accent, Metallic paint, Nissan connect EV 8" touch screen navigation and entertainment system, Nissan i-key, Parking Sensors, Part leather/Ultra suede upholstery, Power Steering, Pro pilot Pack - Leaf, PTC (Positive Temp Co-efficient) heater, Push button starter, Quick charge port, Rain sensor wipers, Rear-facing Camera, Rear assist grips, Rear cross traffic alert, Rear head restraints, Rear heater duct, Rear privacy glass, Rear view camera, Remote audio control, Remote central locking, Satellite Navigation, Seatbelt reminder for driver and front passenger, Side airbags, Speed limiter, Speed sensitive power steering, Split Folding Rear Seats, Tech Pack - Leaf, Telematics system, Thatcham Cat.1 alarm, Tilt adjustable steering wheel, Tinted Glass, Touch screen display, Traction control, Trip computer, Tyre pressure monitoring system, Tyre puncture repair kit, USB Connection, USB port, VDC Dynamic Vehicle Control, Voice control, Voice control system

Engine Power BHP: 147.5BHP