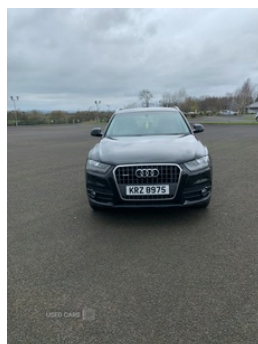


# Audi Q3 2.0 TDI [177] Quattro SE 5dr S Tronic | Dec 2013 AUTOMATIC

# £6,950



December 2013 Audi Q3 Quattro 177bhp diesel, Automatic in great condition. 102k miles from new 1 previous keeper, current mature lady keeper since 2016 Good service history All handbooks and 2 keys Timing belt and water pump replaced MOT'd until 20-05-2026 FULL YEAR'S MOT Body work is in great condition Interior is in great condition. All around electric windows, electric mirrors and air conditioning 4 very good tyres, with the front pair having recently been replaced Personal reg removed from car at the end of February in preparation of the sale

## Vehicle Features

3x3 point rear seatbelts, 6.5" colour display screen, 12V power in rear centre console, ABS+Electronic Brake force Distribution, Acoustic windscreen, Audi music interface, Bluetooth hands free telephone connection, Body colour door mirrors, Body coloured bumpers, Coming home function, Concert radio/single CD player with MP3 facility, Curtain airbags, Diesel particulate filter, Door mirror integrated indicators, Driver and passenger airbags, Driver and passenger side airbags, Dual zone climate control, Dynamic suspension, EDL + ASR, Electrically operated child locks on rear doors, Electromechanical parking brake, ESP, First aid kit, Front and rear electric windows, Front and rear

<b>Miles:</b>	102000
<b>Fuel Type:</b>	Diesel
<b>Transmission:</b>	Automatic/Other
<b>Colour:</b>	Black
<b>Engine Size:</b>	1968
<b>CO2 Emission:</b>	156
<b>Tax Band:</b>	G (£265 p/a)
<b>Body Style:</b>	Sport utility vehicle
<b>Insurance group:</b>	21E
<b>Reg:</b>	Krz8975

## Technical Specs

<b>DIMENSIONS</b>	
<b>Length:</b>	4385mm
<b>Width:</b>	1831mm
<b>Height:</b>	1608mm
<b>Seats:</b>	5
<b>Luggage Capacity (Seats Up):</b>	420L
<b>Gross Weight:</b>	2185KG
<b>Max. Loading Weight:</b>	600KG

<b>PERFORMANCE &amp; ECONOMY</b>	
<b>Fuel Consum. (Urban Cold):</b>	40.4MPG
<b>Fuel Consum. (Extra Urban):</b>	53.3MPG
<b>Fuel Consum. (Combined):</b>	47.9MPG
<b>Fuel Tank Capacity:</b>	64L
<b>Number Of Gears:</b>	7 SPEED
<b>Top Speed:</b>	132MPH
<b>Acceleration 0-100 km/h:</b>	8.2s
<b>Engine Power BHP:</b>	174.3BHP

headrests, Front and rear velour floor mats, Front centre armrest with storage compartment and angle adjustment, Front fog lights, Front passenger airbag deactivation, Headlight range control, Heated windscreen washer jets, Height/reach adjust steering wheel, ISOFIX on front passenger and rear outer seats, Light and rain sensor for auto activation of lights and windscreen wipers, Locking wheel bolts, Low washer fluid indicator, MMI - Multi Media Interface control system, On board computer, PAS, Rear wiper, Remote central locking, Seatbelt warning light, Service interval indicator, Speed dependent audio volume control, Split fold rear seat, Sunband for windscreen, Thatcham category 1 alarm + immobiliser, Under floor storage in luggage area, Voice control system, Warning triangle