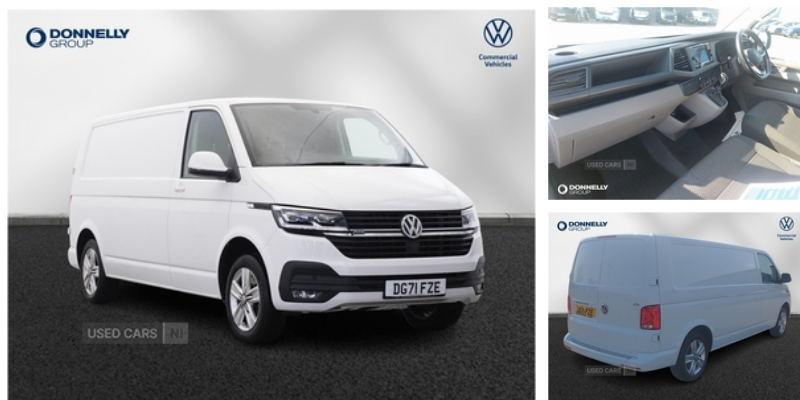


Volkswagen Transporter 83kW 37.3kWh Advance Van Auto | Sep 2021

FULL ELECTRIC, PLYLINED, COLOUR CODED, ALLOYS

£9,985 + VAT



Volkswagen Transporter 83kW 37.3kWh Advance Van Auto

Vehicle Features

2 point 2nd row centre seatbelt, 2 USB interfaces type C in dashboard, 3 point inertia reel seatbelts on front seats, 4 speakers, 4 stages windshield wiper intermittent control for windshield wipers, 12V socket, 17" chassis with 17" brake system, 17" Devonport silver alloy wheels, Anti-lock Braking System, Anti theft alarm system with interior monitoring in cab, Anti theft alarm system with interior monitoring in cab, ASR, Auto dimming interior rear view mirror, Automatic headlight control, Automatic headlight control, Automatic post collision braking system, backup horn and towing protection, backup horn and towing protection, Bluetooth hands free kit, Brake assist, Closing rear wing door with unlatching from the inside, Coathanger (1), Comfort headliner in cab, Comfort headliner in cab, Comfort pack - eTransporter, Composition colour radio with 6.5" touchscreen, Cross wind assist, Dash panel with open stowage compartments, Dash panel with open stowage compartments, Digital radio reception (DAB+), Dimmable dashboard illumination, drink holders and lockable glovebox, drink holders and lockable glovebox, Driver alert system, Driver and front passenger airbag with front passenger airbag deactivation, Dust/pollen filter, Electric windows, Electromechanical speed sensitive power steering, Electromechanical speed sensitive power steering, Electronically controlled air conditioning system, Electronically controlled heating system, electronic diffenetial lock, Electronic stability control, Engine immobiliser, Exterior pack - Transporter, Front and rear left without window closed side panel in load

Miles:	19540
Fuel Type:	Electric
Transmission:	Automatic
Colour:	White
Tax Band:	Light goods vehicle (£345 p/a)
Body Style:	Van
Reg:	DG71FZE

Technical Specs

DIMENSIONS	
Length:	5304mm
Width:	1904mm
Height:	1990mm
Seats:	3
Luggage Capacity (Seats Up):	Not AvailableL
Gross Weight:	3200KG

PERFORMANCE & ECONOMY	
Fuel Tank Capacity:	Not AvailableL
Number Of Gears:	1 SPEED
Top Speed:	00056MPH
Acceleration 0-100 km/h:	17.4s
Engine Power BHP:	110BHP

compartment, Front assist including city emergency braking system, Front comfort seats with height adjustment, Front fog lamps with cornering light, Glove compartment with illumination, Grey instrument dials, Half height side trim panels and roof trim panels made of hardboard, hardboard roof trim in passenger and load compartment, hardboard roof trim in passenger and load compartment, Heated driver and front passenger seats, Heated laminated windshield, Heat insulating windows in cab, height and longitudinally adjustable steering column, height and longitudinally adjustable steering column, High beam control, hill start assist, Interior plastic loading edge protection, Jack and tool kit, Leather trimmed multi-function steering wheel with height and longitudinal adjustment, leaving home and manual coming home feature, leaving home and manual coming home feature, LED Interior lighting in load space area, LED Interior lighting with two reading lights in the roof console, Left convex exterior mirror, Lockable wheel bolts, lower dashboard in palladium, lower dashboard in palladium, Low rolling resistance tyres - 215/60 R17 C 109/107T, Multi-function display Premium with multi-color display, Power folding electric heated and adjustable door mirrors, Radiator grille with 2 chrome trims, Rain sensor, Rear wing doors without window apertures, Reinforced lashing rings for load restraint system, Right convex exterior mirror, Safelock, SD card slot, Side indicator repeaters, Single tone horn, Sliding door on the left in load compartment, Standard anti drum measures, Start/stop system with regenerative breaking, Upper dashboard and floor covering in titanium black, Upper dashboard and floor covering in titanium black, Volkswagen app connect, Warning buzzer and light for driver and front passenger seat belt not fastened