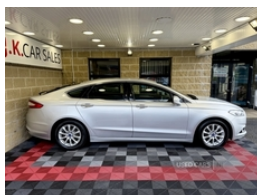


Ford Mondeo 1.6 TDCi EOnetic Titanium 5dr | Jan 2015

£6,995

FINANCE FROM £ 153 PER MONTH WITH £ 0 DEPOSIT / FREE ROAD TAX



2015 Ford Mondeo 1.6 TDCi EOnetic Titanium

1.6 TDCi Diesel 116BHP 6 speed manual

75K miles with service history

MOT 28/12/2025

3 months warranty

£0 Road TAX

2 keys

Just fully serviced

Trade ins welcome

Dual zone air conditioning, Bluetooth connectivity, CD/AUX/Bluetooth/USB audio, DAB radio, touch screen, virtual cockpit, electric windows and mirrors, cruise control, multifunction steering wheel, power fold wing mirrors, ISOFIX, 16" alloy wheels

Finance this car from £153 per month with £0 deposit

Walkaround video available

£6995

ROI customers

VRT calculated at only €

NOx levy €

PM, text or call 07724336181

Miles:	75000
Fuel Type:	Diesel
Transmission:	Manual
Colour:	Silver
Engine Size:	1560
CO2 Emission:	94
Tax Band:	A (£20 p/a)
Body Style:	Saloon
Insurance group:	17E
Reg:	VFZ8460

Technical Specs

DIMENSIONS

Length:	4871mm
Width:	1852mm
Height:	1482mm
Seats:	5
Luggage Capacity (Seats Up):	541L
Gross Weight:	2170KG
Max. Loading Weight:	650KG

PERFORMANCE & ECONOMY

Fuel Consum. (Urban Cold):	68.9MPG
Fuel Consum. (Extra Urban):	85.6MPG
Fuel Consum. (Combined):	78.5MPG
Fuel Tank Capacity:	62L
Number Of Gears:	6 SPEED
Top Speed:	119MPH
Acceleration 0-100 km/h:	12.1s
Engine Power BHP:	114BHP

J.K. CAR SALES
84 Cunninghams Lane
Dungannon
BT71 6BX

#ford #fordmondeo #jkcarsales #usedcarsni

Vehicle Features

'Ford Power' starter button, 'Quickclear' heated windscreen/heated washer jets, 16" alloy wheels, ABS+EBA, Ambient lighting, Auto dimming interior mirror, Automatic headlights, Automatic rain sensing wipers, Bluetooth connectivity with voice control, Body coloured bumpers, Body colour rocker mouldings, Centre console with armrest, Chrome window surround, Curtain airbags, Diesel particulate filter, Driver/front passenger airbag, Drivers knee airbag, Dual zone air conditioning, Easy fuel capless refuelling system, Electric folding door mirrors, Electric front windows, Electric rear windows with global closing, Electronic parking brake, ESP + traction control, Ford SYNC 2 with 8" colour touch screen, Front fog lights with chrome surrounds, Height adjustable passenger seat with lumbar support, Hill start assist, Intelligent Protection System (IPS), Isofix on 2nd row rear seats, Keyless Start, Lane keep assist, Leather steering wheel, LED tail lights, PAS, Remote central double locking, Ski hatch, Sports seats, Sports suspension, SYNC Emergency Assistance, TFT cluster screen, Thatcham Cat.1 alarm, Traffic sign recognition, Trip computer, Vector Cloth Upholstery