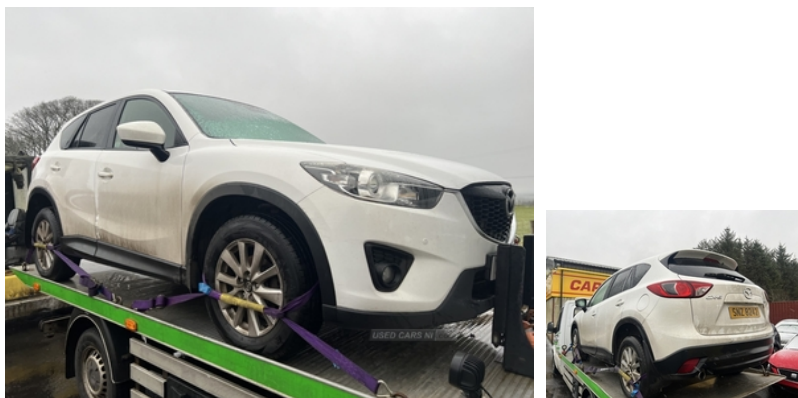




Mazda CX-5 2.2d SE-L 5dr | Jun 2013



Vehicle Features

3 point front seatbelts with pre-tensioners, 3 rear 3 point seatbelts, 5.8" Colour centre display monitor, 6 speakers, 17" alloy wheels, 40:20:40 split folding rear seat, ABS, Auto dimming rear view mirror, Automatic headlights with dusk sensor, Auxiliary power socket in luggage area, Bluetooth connectivity with voice control, Body coloured bumpers, Cloth upholstery, Cruise control, Daytime running lights, Deadlock, Driver seat lumbar adjustment, DSTC-Dynamic Stability and Traction Control, Dual exhaust pipes, Dual front airbags, Dual zone climate control, Electric adjustable/heated/folding door mirrors, Electric front/rear windows, Front and rear curtain airbags, Front and rear parking sensors, Front armrest, Front fog lights, Front head restraints, Front passenger airbag deactivation, Front side airbags, Hill hold assist, Illuminated glovebox, Immobiliser, Isofix system on outer rear seats, Leather steering wheel/gearknob/handbrake grip, PAS, Power door locks, Push button starter, Radio/CD, Rain sensor, Rear centre armrest, Rear headrests, Rear privacy glass, Rear roof spoiler, Rear wiper, Remote central locking, Seatbelt reminder front and rear, Smart City Brake Support - SCBS, Steering wheel mounted audio/cruise controls, Sunglasses holder, Thatcham Cat.1 alarm, Tonneau cover, Trip computer, Tyre pressure monitoring system, Tyre repair kit, USB/iPod/auxiliary input connections

Fuel Type:	Diesel
Transmission:	Manual
Colour:	White
Engine Size:	2191
CO2 Emission:	119
Tax Band:	C (£35 p/a)
Body Style:	Sport utility vehicle
Insurance group:	18E
Reg:	SNZ8242

Technical Specs

DIMENSIONS	
Length:	4555mm
Width:	1840mm
Height:	1710mm
Seats:	5
Luggage Capacity (Seats Up):	503L
Gross Weight:	2035KG
Max. Loading Weight:	585KG

PERFORMANCE & ECONOMY	
Fuel Consum. (Urban Cold):	52.3MPG
Fuel Consum. (Extra Urban):	68.9MPG
Fuel Consum. (Combined):	61.4MPG
Fuel Tank Capacity:	56L
Number Of Gears:	6 SPEED
Top Speed:	126MPH
Acceleration 0-100 km/h:	9.2s

Engine Power BHP: 147.5BHP