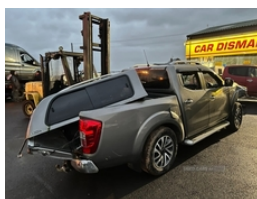
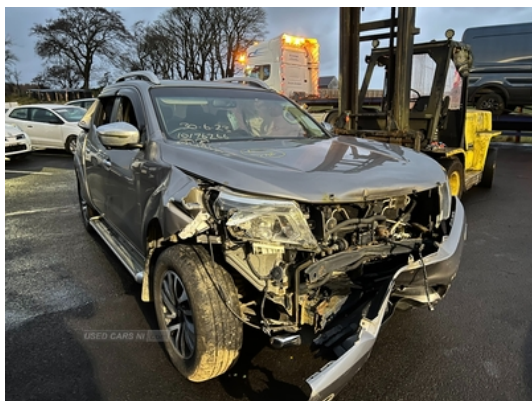




## Nissan Navara Double Cab Pick Up Tekna 2.3dCi 190 4WD Auto | Mar 2018



<b>Fuel Type:</b>	Diesel
<b>Transmission:</b>	Automatic
<b>Colour:</b>	Grey
<b>Engine Size:</b>	2298
<b>CO2 Emission:</b>	183
<b>Tax Band:</b>	Light goods vehicle (£345 p/a)
<b>Body Style:</b>	Pickup
<b>Reg:</b>	WNZ898

### Vehicle Features

2x front cup holder, 3 x 12V power outlets, 4 way adjustable passenger seat, 5" HD colour TFT Screen, 6 speakers, 8 way adjustable drivers seat, 18" alloy wheels, ABS + EBD, Alarm and immobiliser, App integration, Around View Monitor Camera System, Auto dimming rear view mirror, Automatic coming/leaving home lighting function, Aux input socket, Bluetooth connectivity, Body coloured front bumper, C-channel loadbox tie downs, Chrome door handles, Chrome door mirrors, Chrome fog light surrounds, Chrome front grille, Chrome step in rear bumper, Connect 2.0 entertainment system with touch screen sat nav, Curtain airbags, Diesel particulate filter, Door step light, Driver and passenger airbag, Driver knee airbag, Dual zone climate control, Electrically adjustable door mirrors, Electric folding door mirrors, Electric front windows, Electric rear windows, Electromagnetic lock on fuel lid, Electronic limited slip differential (eLSD), Forward emergency brake assist, Front/rear cupholders, Front armrest, Front fog lights, Front headrests, Heated door mirrors, Heated front seats, High level LED centre brake light, Hill Descent Control, Hill start assist, Indicators in front door mirrors, Intelligent key, ISOFIX child seat mountings, Leather steering wheel and gear knob, Leather upholstery, LED Daytime running lights, LED headlights, LED tail light, Load restraining hooks, Locking wheel nuts, Low fuel level warning light, Mud flaps front and rear, On-board computer, Outside temperature gauge, PAS, Passenger airbag with deactivate

### Technical Specs

#### DIMENSIONS

<b>Length:</b>	5330mm
<b>Width:</b>	1850mm
<b>Height:</b>	1805mm
<b>Seats:</b>	5

**Luggage Capacity (Seats Up):**  
Not AvailableL

**Gross Weight:** 3045KG

#### PERFORMANCE & ECONOMY

<b>Fuel Consum. (Urban Cold):</b>	32.5MPG
<b>Fuel Consum. (Extra Urban):</b>	47.9MPG
<b>Fuel Consum. (Combined):</b>	40.9MPG
<b>Fuel Tank Capacity:</b>	80L
<b>Number Of Gears:</b>	7 SPEED
<b>Top Speed:</b>	112MPH
<b>Acceleration 0-100 km/h:</b>	10.8s

switch, Pollen filter, Privacy glass, Rake adjustable steering wheel, Rear air suspension with 5 link, Rear air vents, Rear headrests, Rear parking sensor, Rear reading light, Rear view camera, Remote alarm system/immobiliser, Remote central locking, Roof rails, Side airbags, Side steps, Single illuminated/lockable glovebox, Spare wheel lock, Steering wheel mounted audio controls, Stop/start button, Tailgate spoiler, Tailored carpet mats, Temp spare wheel, traffic update, USB connection, Vehicle dynamic control, Windscreen shadeband

**Engine Power BHP:** 187.7BHP