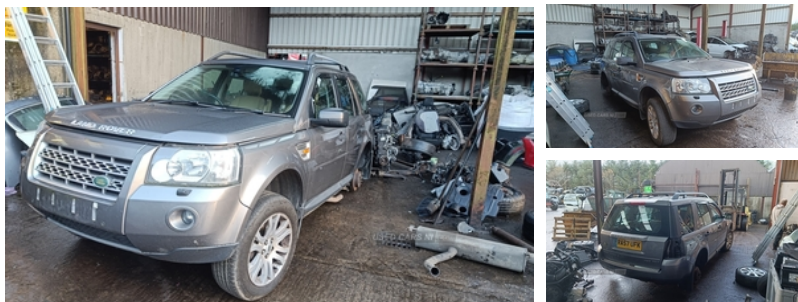




Land Rover Freelander 2.2 Td4 HSE 5dr | Feb 2008



CONTACT HIGGINS CAR DISMANTLERS FOR FURTHER DETAILS
DURING OFFICE HOURS

Vehicle Features

3 position memory for driver's seat and driving mirrors, 3 rear headrests, 5 x 3 point seatbelts, 60/40 split folding rear seat, ABS, Auto-dipping door mirrors in reverse gear, Auto climate control with air filtration and air quality sensing for auto recirculation, Auto dimming rear view mirror with humidity sensor, Automatic headlamp activation, Automatic rain sensing wipers, Auxiliary Audio Jack, Blip entry, Body colour bumpers, Clearview Pack - Freelander 2, Cold Climate Pack - Freelander 2, Cruise control, Driver information module, Driver seat lumbar adjustment, Dual stage Driver/Passenger Airbags, Electric adjustable/heated/folding door mirrors, Electric front/rear windows, Electric Sunroof - sliding front glass and fixed glass rear Panoramic roof with illuminated vanity mirrors, Electronic brake force distribution, Front + rear carpet mats, Front head restraints, Front Parking Aid, Front seatbelt pretensioners + load limiters, Front side airbags with curtain airbags, Front skid plate, Heated front seats, Hill descent control, ign docking and press button start/stop, Knee bolster - driver only, Leather steering wheel, Locking wheel nuts, Luggage cover, Navigation system with TMC, One shot lowering/closing on front windows, PAS, Personal telephone integration system, Pollen filter, Puddle and footwell lamps, Radio/dash mounted 6 cd player/ProLogic II surround sound/12x40W amp/subwoofer + 14 speakers, Rear centre armrest with 2 cupholders + storage, Rear Headphone Sockets, Rear parking aid, Rear wash/wipe, Remote central

Fuel Type:	Diesel
Transmission:	Manual
Colour:	Grey
Engine Size:	2179
Body Style:	Sport utility vehicle
Insurance group:	22E
Reg:	RA57U FK

Technical Specs

DIMENSIONS	
Length:	4500mm
Width:	1910mm
Height:	1740mm
Seats:	5
Luggage Capacity (Seats Up):	755L
Gross Weight:	2505KG
Max. Loading Weight:	550KG
PERFORMANCE & ECONOMY	
Fuel Consum. (Urban Cold):	30.6MPG
Fuel Consum. (Extra Urban):	45.5MPG
Fuel Consum. (Combined):	37.7MPG
Fuel Tank Capacity:	68L
Number Of Gears:	6 SPEED
Top Speed:	112MPH
Engine Power BHP:	158.2BHP

locking/doors+fuel cap+tailgate, Robust passive engine immobilisation, Roll stability control, Stability control, Steering wheel mounted audio/cruise controls, Terrain Response, Tilt/reach adjustable steering wheel, Traction control, Trip computer, Two rear outer seat isofix location points