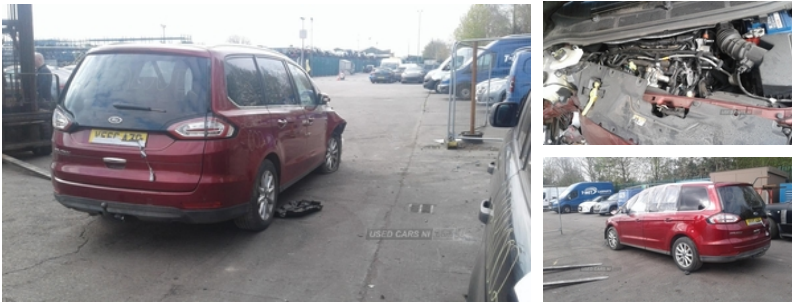




84 Armagh Road,, Dungannon, BT71 7JA
Option 3: 02837549092

Ford Galaxy 2.0 TDCi 180 Titanium X 5dr Powershift | Feb 2017



ENGINE AND GEAR BOX ARE PERFECT. WE HAVE OVER A THOUSAND CARS IN STOCK WITH A GOOD RANGE OF BOTH OLD AND FRESH VEHICLES. WE OFFER FREE DELIVERY ON ALL PARTS THROUGHOUT IRELAND. PLEASE CALL* ARMAGH 048 37 549092 OPTION 3*CAMPsie 048 71812727*MALLUSK 048 90836252

Vehicle Features

'Ford Power' starter button, 'Quickclear' heated windscreen/heated washer jets, 2 height adjustable headrests - 3rd row, 3 height adjustable headrests - 2nd row, 3 individual fold flat 2nd row seats, 3 point seatbelts on all seats, 8 way power adjustable passenger seat, 10 way electric power adjustable drivers seat, ABS, Active park assist, Auto dimming rear view mirror, Automatic headlights, Automatic rain sensing wipers, Auxiliary input socket, Bluetooth connectivity with voice control, Body colour bumpers, Body colour door mirrors, Child proof door locks, Chrome trim to lower side windows, Diesel particulate filter, Driver's seat memory, Driver/passenger sunvisors with illuminated vanity mirrors + covers, Driver and passenger airbags, Driver and passenger side airbags, Drivers knee airbag, Drivers seat with electric height adjustment + manual lumbar support, Dual zone air conditioning, Electric folding door mirrors, Electric front and rear windows + one touch + global open/closing, Electric panoramic sunroof with electric sunblind, Electronic brake force distribution, Electronic parking brake, ESP with traction control + emergency brake assist, Ford SYNC 3 with 8" colour touch screen, Front and rear parking sensors, Front and rear velour floor mats, Front fog lights, Front headrests, Front seat armrests, Front seatback tables, Front seat storage pockets, Front sports seats, Heated front seats, Heated rear window, Hydraulic PAS, Immobiliser, Isofix child seat attachment, Keyless entry, Lane keep assist, Leather gear knob,

Fuel Type:	Diesel
Transmission:	Semi-Automatic
Colour:	Red
Engine Size:	1997
Body Style:	MPV
Insurance group:	24E
Reg:	VF66AZG

Technical Specs

DIMENSIONS	
Length:	4848mm
Width:	1916mm
Height:	1747mm
Seats:	7
Luggage Capacity (Seats Up):	700L
Gross Weight:	2540KG
Max. Loading Weight:	882KG
PERFORMANCE & ECONOMY	
Fuel Consum. (Urban Cold):	47.9MPG
Fuel Consum. (Extra Urban):	57.7MPG
Fuel Consum. (Combined):	52.3MPG
Fuel Tank Capacity:	70L
Number Of Gears:	6 SPEED
Top Speed:	129MPH
Acceleration 0-100 km/h:	9.6s
Engine Power BHP:	177BHP

Leather trimmed steering wheel, LED daytime running lights,
Lights on warning, Locking wheel nuts, Mini steel spare wheel,
Outside temperature display, Pollen filter, Reach + rake
adjustable steering column, Rear cupholders, Rear privacy glass,
Rear seat easy entry, Rear view camera, Remote control
central/double locking, Seatbelt warning, Side curtain airbags,
Silver roof rails, Steering wheel audio controls, Sunglasses
storage, SYNC Emergency Assistance, Tailgate wiper -
intermittent with electric wash, Thatcham Cat.1 alarm, Tonneau
cover, Traffic sign recognition, Trip computer, Twin chrome
exhaust tailpipes, Tyre pressure monitoring system