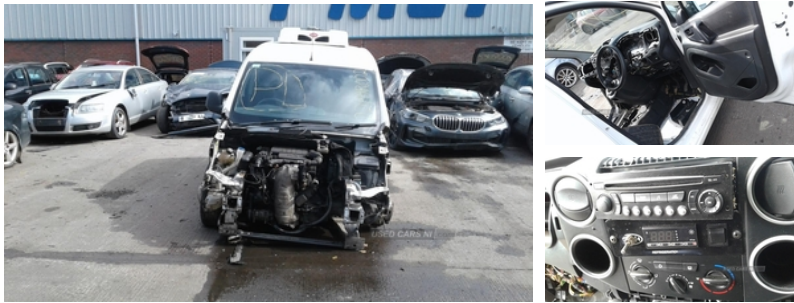




84 Armagh Road,, Dungannon, BT71 7JA  
Option 3: 02837549092

## Peugeot Partner 850 SE 1.6 HDi 90 Van | Jan 2012



ENGINE AND GEAR BOX ARE PERFECT. WE HAVE OVER A THOUSAND CARS IN STOCK WITH A GOOD RANGE OF BOTH OLD AND FRESH VEHICLES. WE OFFER FREE DELIVERY ON ALL PARTS THROUGHOUT IRELAND. PLEASE CALL\* ARMAGH 048 37 549092 OPTION 3\*CAMPsie 048 71812727\*MALLUSK 048 90836252

### Vehicle Features

2 speakers, 2 speed intermittent front wipers, 4 adjustable face-level heating and ventilation outlets, 6 hooks in load area, 12V accessory socket, 12v socket in loadspace, 15" steel wheels, ABS + EBA + EBD, Air recirculation system, Auto door locking, Auto hazard lights, Automatic fuel cut off & door unlocking, Black bumpers, Black side rubbing strips, Carpet in front cabin, Central locking push button on dash, Cigarette lighter, Cloth upholstery, Collapsible steering column, Courtesy light, Cup holders, Dashboard storage areas, Dash mounted gear lever, Digital trip recorder, Door mounted armrests, Door open warning light, Driver and passenger sunvisors + vanity mirrors, Drivers airbag, Drivers seat adjustable for reach and rake, Electric heated door mirrors, Front and rear door pockets, Front door pockets with bottle holder, Front seatbelt pre-tensioners + force limiters, Full size spare wheel, Glovebox with lid, Handbrake grip + gaiter in leather, Hard plastic load floor protection, Height adjustable drivers seat, Height adjustable front seatbelts, Height adjustable head restraints, Height and reach adjustable steering wheel, Lights on warning buzzer, Multiflex fold flat dual passenger seat, Overhead driver and front passenger storage, Plus pack - Partner, Pre heater warning, Radio/CD and mp3 player, Remote central locking 3 button key, Remote headlamp adjustment, Removable cargo light, Rolling code transponder immobiliser, Roof mounted aerial, Seatbelt warning indicator, Selective

<b>Fuel Type:</b>	Diesel
<b>Transmission:</b>	Manual
<b>Colour:</b>	White
<b>Engine Size:</b>	1560
<b>Tax Band:</b>	Light goods vehicle (£345 p/a)
<b>Body Style:</b>	Van
<b>Reg:</b>	CXZ3814

### Technical Specs

<b>DIMENSIONS</b>	
<b>Length:</b>	4380mm
<b>Width:</b>	1810mm
<b>Height:</b>	1828mm
<b>Seats:</b>	3

### Luggage Capacity (Seats Up):

Not AvailableL

<b>Gross Weight:</b>	2205KG
----------------------	--------

### PERFORMANCE & ECONOMY

<b>Fuel Consum. (Urban Cold):</b>	40.4MPG
<b>Fuel Consum. (Extra Urban):</b>	55.4MPG
<b>Fuel Consum. (Combined):</b>	48.7MPG
<b>Fuel Tank Capacity:</b>	60L
<b>Number Of Gears:</b>	5 SPEED
<b>Top Speed:</b>	98MPH
<b>Acceleration 0-100 km/h:</b>	15.4s
<b>Engine Power BHP:</b>	88.5BHP

cab/cargo area central locking, Sliding drawer under driver's seat, Steering wheel controls for remote audio, Temp spare wheel, Tinted glass, Trip computer, Twin rear headrests, Variable PAS