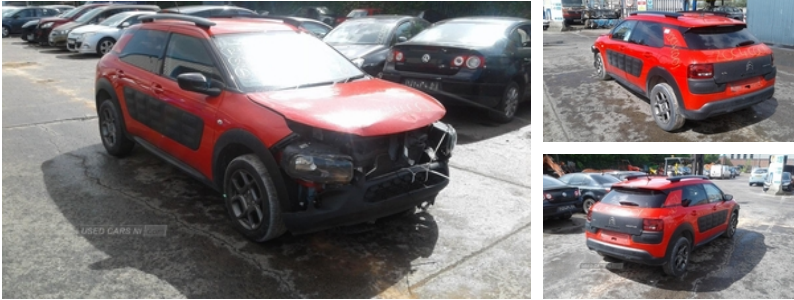




84 Armagh Road,, Dungannon, BT71 7JA
Option 3: 02837549092

Citroen C4 Cactus 1.6 BlueHDi Feel 5dr | Apr 2015



Engine and gearbox are both in good working condition as are the rest of the parts that are still available. Breaking a wide range of cars with hundreds in stock For any queries on a part for this car or any other particular car give T-met a call on ARMAGH 028 37 549092 option 3

Vehicle Features

3 rear headrests, 3x3 point rear seatbelts, 7" touch screen, 12V socket, ABS + EBD + EBA, Auxiliary input socket, Bluetooth audio streaming, Bluetooth Handsfree Phone Connection, Body colour door handles, Body coloured bumpers, Cruise control + speed limiter, Curtain airbags, DAB Digital radio, Deadlocks, Diesel particulate filter, Driver/Front Passenger airbags, Driver/passenger sunvisors and vanity mirrors, Electric adjustable door mirrors, Electric child locks, Electric front windows, ESP, Front courtesy lights, Front door pockets, Front head restraints, Front reading lights, Front seatbelt pretensioners with force limiters, Front side airbags, Gear selection indicator, Height adjustable driver's seat, Height adjustable front seatbelts, Hill start assist, Isofix system on outer rear seats, LED daytime running lights, Passenger airbag deactivate switch, Reach + rake adjustable steering column, Rear coat hooks, Rear wiper, Remote central locking, Steering wheel mounted controls, Tyre pressure monitor, Variable PAS

Fuel Type:	Diesel
Transmission:	Manual
Colour:	Red
Engine Size:	1560
CO2 Emission:	90
Tax Band:	A (£20 p/a)
Body Style:	Sport utility vehicle
Insurance group:	18A
Reg:	SN15ORU

Technical Specs

DIMENSIONS	
Length:	4157mm
Width:	1729mm
Height:	1480mm
Seats:	5
Luggage Capacity (Seats Up):	358L
Gross Weight:	1610KG
Max. Loading Weight:	540KG
PERFORMANCE & ECONOMY	
Fuel Consum. (Urban Cold):	74.3MPG
Fuel Consum. (Extra Urban):	88.3MPG
Fuel Consum. (Combined):	83.1MPG
Fuel Tank Capacity:	45L
Number Of Gears:	5 SPEED
Top Speed:	114MPH
Acceleration 0-100 km/h:	10.7s
Engine Power BHP:	97.9BHP



