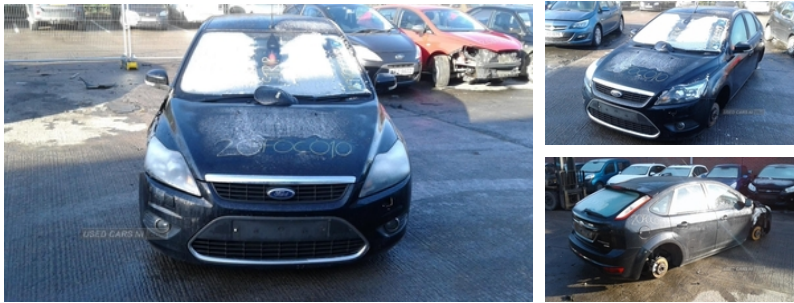




84 Armagh Road,, Dungannon, BT71 7JA
Option 3: 02837549092

Ford Focus 2.0 TDCi Titanium 5dr [DPF] PowerShift | Oct 2010



Engine and gearbox are both in good working condition as are the rest of the parts that are still available. Breaking a wide range of cars with hundreds in stock For any queries on a part for this car or any other particular car give T-met a call on ARMAGH 028 37 549092 option 3

Vehicle Features

2 map reading lights, 3 spoke leather steering wheel, 4 speed fan with direction control + 2 side window demist vents, 8 speakers, 60/40 split back and cushion rear seats with 2 height adjustable headrests, ABS+Electronic Brake force Distribution, Advanced restraint system (ARS), Air conditioned glovebox, Air recirculation control, Aluminium finish interior door handles, Aluminium scuff plates, Anti-burst high-security shielded door locks, Anti-lock Braking System+Electronic Brake force Distribution, Anti submarining/fully reclining front seats, Auto dimming rear view mirror, Automatic headlights, Body colour bodyside mouldings, Body colour bumpers, Body colour door handles, Body colour electric adjustable heated door mirrors, Body colour rear spoiler, Central locking fuel flap, Centre console storage box/armrest, Centre console with front cupholders/pen holder/heating ducts to rear, Chrome grille, Courtesy light in luggage compartment, Cruise control, Deflation detection system, Diesel particulate filter, Digital clock, Door ajar warning, Driver's seat with adjustable lumbar support, Driver/passenger front seatback pockets, Driver/passenger sunvisors with illuminated vanity mirrors + covers, Driver airbag, Electric boot release, Electric front and rear windows + one touch + global open/closing, Electric hydraulic PAS, Electric hydraulic Power Assisted Steering, ESP with traction control + emergency brake assist, Exterior temperature gauge, Folding rear centre armrest, Front and rear folding grab handles (coat hooks on rear), Front

Fuel Type:	Diesel
Transmission:	Semi-Automatic
Colour:	Black
Engine Size:	1997
CO2 Emission:	154
Tax Band:	G (£265 p/a)
Body Style:	Hatchback
Insurance group:	18E
Reg:	BRZ8346

Technical Specs

DIMENSIONS	
Length:	4337mm
Width:	1839mm
Height:	1500mm
Seats:	5
Luggage Capacity (Seats Up):	396L
Gross Weight:	1950KG
Max. Loading Weight:	514KG

PERFORMANCE & ECONOMY	
Fuel Consum. (Urban Cold):	36.2MPG
Fuel Consum. (Extra Urban):	60MPG
Fuel Consum. (Combined):	48.6MPG
Fuel Tank Capacity:	53L
Number Of Gears:	6 SPEED
Top Speed:	124MPH
Acceleration 0-100 km/h:	9.6s
Engine Power BHP:	134.1BHP

fog lights, Front footwell light, Front inertia reel height adjustable seatbelts with pre-tensioners, Front overhead courtesy lights with theatre style dimming and delay, Front passenger airbag, Front side airbags, Front variable intermittent wipers with electric wash, Guide me home headlights with delay switch-off, Handbrake release button with aluminium finish, Headlight levelling control, Heated rear window, Height adjustable front headrests, Illuminated heater controls, Immobiliser-Passive Anti-Theft System (PATS), Key operated locking bonnet, Leather gear lever knob with silver insert and aluminium finish ring, Lights on warning, Locking wheel nuts, Low screen washer fluid warning, Perimeter alarm with volume sensing, Pollen/active carbon filters, Quickclear heated windscreen, Rain sensor, Reach + rake adjustable steering column, Rear bumper scratch pad moulding, Rear child proof door locks, Rear intermittent wiper with electric wash and auto reverse function, Rear overhead dome courtesy light, Remote central double locking, Rubber centre console stowage mat, Satin aluminium finish to instrument cluster rings, Side curtain airbags, Sports style front seats, Steering column with mounted audio controls, Stowage unit in upper instrument panel, Sunglasses storage, Third fixed centre rear headrest, Three rear inertia reel lap/diagonal seatbelts, Tie down hooks in luggage area, Trip computer