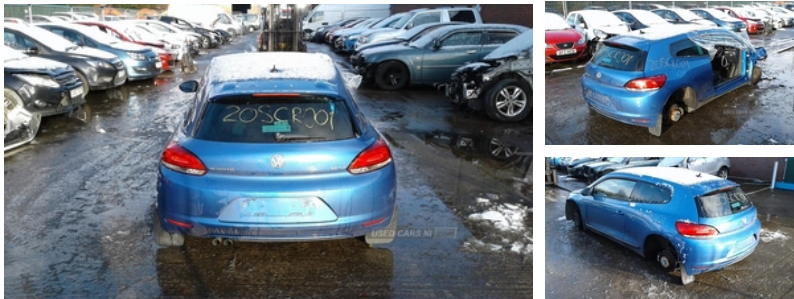




84 Armagh Road,, Dungannon, BT71 7JA  
Option 3: 02837549092

## Volkswagen Scirocco 2.0 TDI GT 3dr | Aug 2009



Engine and gearbox are both in good working condition as are the rest of the parts that are still available. Breaking a wide range of cars with hundreds in stock. For any queries on a part for this car or any other particular car give T-met a call on ARMAGH 028 37 549092 option 3.

### Vehicle Features

'Lights On' warning buzzer, 2 bag hooks in luggage compartment, 2 cupholders, 2 rear 3 point safety belts, 2 rear head restraints, 2 Zone electronic climate control with automatic air recirculation, 8 speakers, 12V socket in luggage compartment, 50/50 split folding rear seat backrest, ABS with Brake Assist, ACC - Adaptive chassis control, Alarm with interior protection, Anti-lock Braking System with Brake Assist, Auto dimming rear view mirror/rain sensor, Automatic activation of hazard warning lights, Body colour door handles, Body colour door mirrors with integral indicators, Body coloured bumpers, Brushed aluminium decorative inserts, Brushed aluminium instrument surrounds, Coming home function, Diesel particulate filter, Door open warning reflectors, Driver/Front Passenger airbags, Driver/passenger active head restraints, Dusk sensor + auto driving lights, Dust/pollen filter, Easy entry slide seats (access to rear seats), Electrically heated + operated door mirrors, Electric front windows, Electronic engine immobiliser, ESP with EDL + ASR, Exterior temperature gauge, Front and rear curtain airbags, Front centre armrest with storage compartment, Front fog lights, Front footwell illumination, Front reading lights, Front seat side impact airbags, Heat insulated tinted glass 65% light absorbing from B pillar back, Height/reach adjust steering wheel, Height adjustable front 3 point seatbelts + pretensioners, Illuminated vanity mirrors, Interior light with delay, Intermittent rear wash/wipe, Isofix Preparation 2 Rear child seats, Leather gear knob, Leather handbrake grip, Leather trimmed three spoke

<b>Fuel Type:</b>	Diesel
<b>Transmission:</b>	Manual
<b>Colour:</b>	Blue
<b>Engine Size:</b>	1968
<b>CO2 Emission:</b>	134
<b>Tax Band:</b>	E (£195 p/a)
<b>Body Style:</b>	Hatchback
<b>Insurance group:</b>	24E
<b>Reg:</b>	GRZ7364

### Technical Specs

DIMENSIONS	
<b>Length:</b>	4256mm
<b>Width:</b>	1810mm
<b>Height:</b>	1404mm
<b>Seats:</b>	4
<b>Luggage Capacity (Seats Up):</b>	292L
PERFORMANCE & ECONOMY	
<b>Fuel Consum. (Urban Cold):</b>	42.8MPG
<b>Fuel Consum. (Extra Urban):</b>	67.3MPG
<b>Fuel Consum. (Combined):</b>	55.4MPG
<b>Fuel Tank Capacity:</b>	50L
<b>Number Of Gears:</b>	6 SPEED
<b>Top Speed:</b>	00129MPH
<b>Engine Power BHP:</b>	138.1BHP

steering wheel, Lockable/illuminated air conditioned glovebox, Luggage compartment cover, Luggage compartment lighting, Matt Chrome decorative inserts in centre console, Multi-function steering wheel, Multifunction computer - Highline, Passenger airbag deactivation system, Rear roof spoiler, Remote central locking with 2 remote folding keys, Remote fuel flap release, Rev counter, SD card slot, Seatbelt warning, Service interval indicator, Speed sensitive variable PAS, Speed sensitive variable Power Assisted Steering, Sports front seats, Steel space saver spare wheel, Storage compartments in doors, Two tone horn