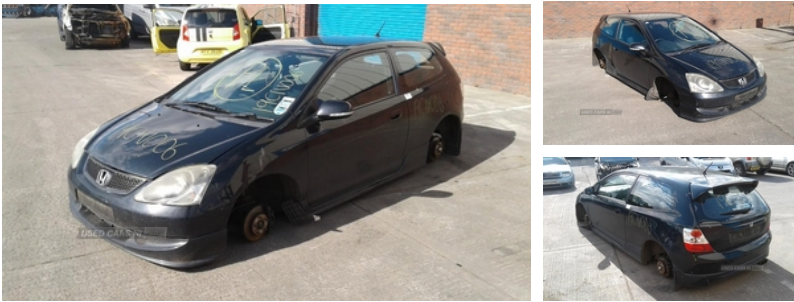




84 Armagh Road,, Dungannon, BT71 7JA  
Option 3: 02837549092

## Honda Civic 1.6 i-VTEC Sport 3dr | Mar 2005



Engine and gearbox are both in good working condition as are the rest of the parts that are still available. For any queries on a part for this car or any other particular car give T-met a call on 028 37 549092 option 3. Breaking a wide range of cars with hundreds in stock

### Vehicle Features

5 three point seatbelts, 16" alloy wheels, 60/40 asymmetric split folding rear seats, ABS+EBD+Brake assist, Adjustable rear head restraints, Aerodynamic bodystyling, Air conditioning, Alarm, Alloy wheels, Anti-lock Braking System, Automatic air conditioning, Black leather bolster + perforated Alcantara panel, Body colour door mirrors and handles, Body coloured bumpers, Centre storage console between front seats, Clear side indicator lenses, Cloth seat trim, Cup holders, Digital clock, Digital odometer, Drivers airbag, Dual SRS airbags, ECU immobiliser, Electrically heated door mirrors, Electric door mirrors, Electric front windows + drivers one touch, Folding rear seats, Front accessory power socket, Front and rear crumple zones, Front and rear speakers, Front electric windows, Front headrests, Front seatbelt pretensioners, Front side airbags, Front sports grille, Front ventilated disc brakes, Full size spare wheel, Headlight on warning buzzer, Heated door mirrors, Height adjustable driver's seat, High level rear brake light, Honda super locks, Immobiliser, Integrated audio unit, Internally adjust headlights, Isofix child seat anchor points, Isofix child seat attachment, Keyless entry, Leather gear knob, Lockable glovebox, Micro antenna, MPG indicator, Outside temperature gauge, PAS, Passenger airbag, Passenger vanity mirror, Pollen filter, Radio/CD, Rear boot spoiler, Rear disc brakes, Rear head restraints, Rear wash/wipe, Rear wiper, Remote central locking, Remote fuel flap release, Side airbags, Side and curtain airbags, Side impact protection beams, Side skirts, Spare wheel, Sports fabric upholstery, Sports

<b>Fuel Type:</b>	Petrol
<b>Transmission:</b>	Manual
<b>Colour:</b>	Black
<b>Engine Size:</b>	1590
<b>CO2 Emission:</b>	157
<b>Tax Band:</b>	G (£265 p/a)
<b>Body Style:</b>	Hatchback
<b>Insurance group:</b>	13E
<b>Reg:</b>	MHZ2629

### Technical Specs

DIMENSIONS	
<b>Length:</b>	4140mm
<b>Width:</b>	1695mm
<b>Height:</b>	1440mm
<b>Seats:</b>	5
<b>Luggage Capacity (Seats Up):</b>	315L
<b>Gross Weight:</b>	1605KG
<b>Max. Loading Weight:</b>	437KG
PERFORMANCE & ECONOMY	
<b>Fuel Consum. (Urban Cold):</b>	32.8MPG
<b>Fuel Consum. (Extra Urban):</b>	51.4MPG
<b>Fuel Consum. (Combined):</b>	42.8MPG
<b>Fuel Tank Capacity:</b>	50L
<b>Number Of Gears:</b>	5 SPEED
<b>Top Speed:</b>	116MPH
<b>Acceleration 0-100 km/h:</b>	10.6s
<b>Engine Power BHP:</b>	108BHP

seats, Tachometer, Thatcham cat 1 ultrasonic alarm, Tilt adjustable steering column, Trip computer, Twin rear tailpipes, Type-R style white instrument dials, Type R sports steering wheel, Visible vehicle identification number, Wing mirror mounted indicators